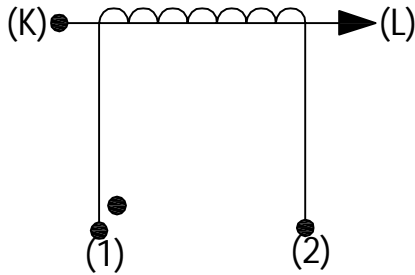


Product Type	Current Transformer
AMGIS Part Number	#u
Customer Part Number	
Place of Manufacture	

SCHEMATIC:



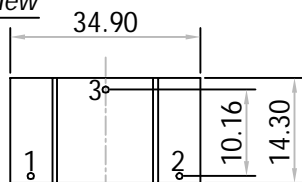
ELECTRICAL SPECIFICATION:

Rated input current	= 50Amps
Primary to Secondary isolation	= 2500VAC
Operating Frequency	= 50 / 60 Hz
Turns Ratio	= 1 : 1000
DC Resistance	= 49.30 Ω
Output Voltage	= 5.0V @ 50A / 100 Ω , 0.1600W
I_o @ V_{rms} : 7.28V	= 1090 μ Arms
Ratio Correction factor (RCF*)	= 1.026@10% (Multiply current reading by this factor to compensate for transformer losses)

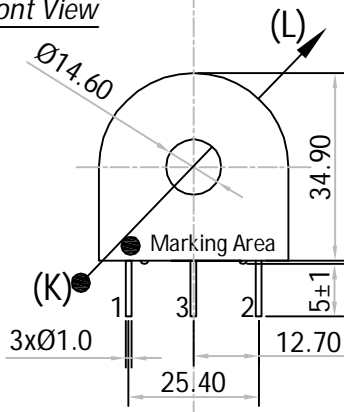
100 Ω	500 Ω	2000 Ω	5000 Ω
0.10	0.43	0.76	0.90

MECHANICAL SPECIFICATION :

Pin Side View

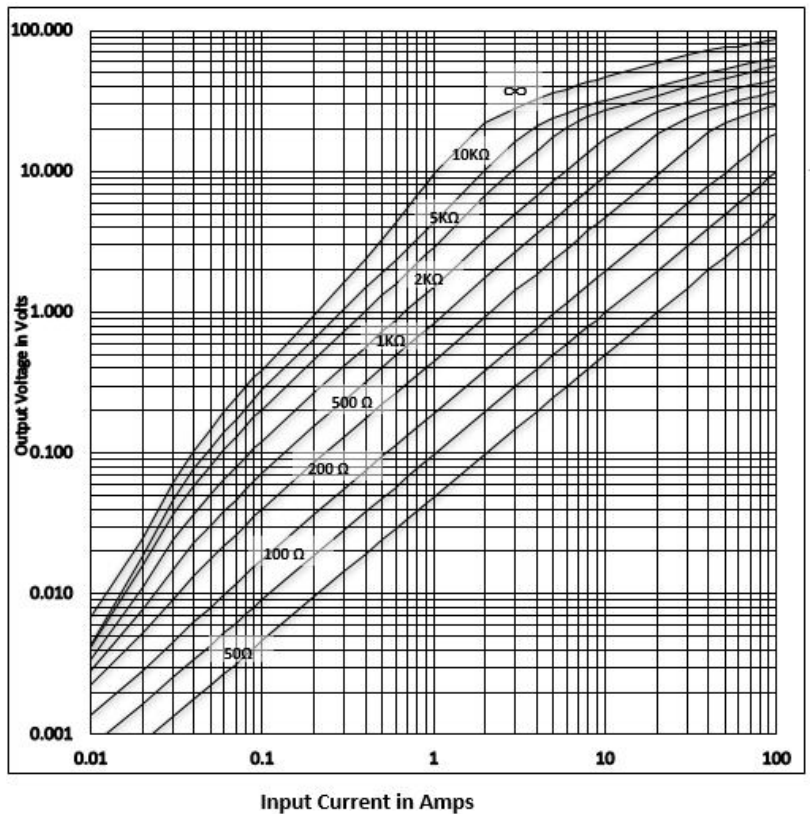


Front View



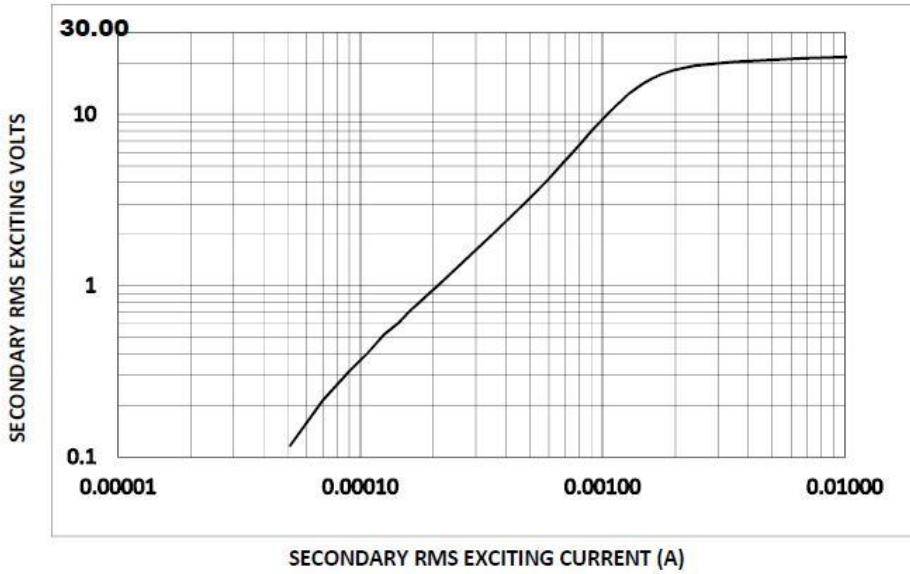
All dimensions are in mm
Linear dimensional tolerance ± 0.2 mm

OUTPUT RESPONSE vs INPUT CURRENT @ RATED BURDEN :

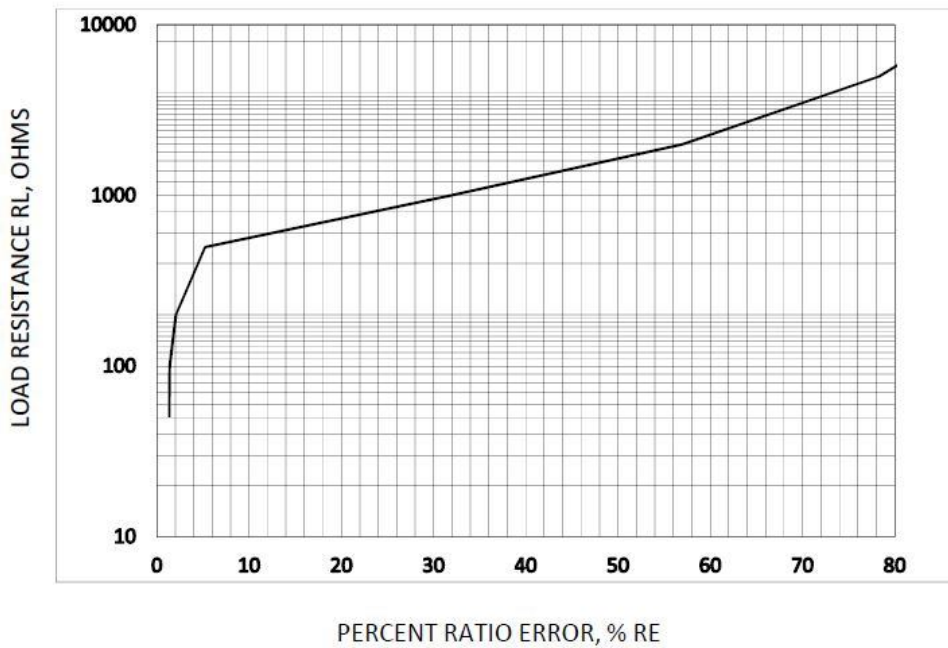


Note : Un-Used pin \rightarrow #3

TYPICAL EXCITATION CURVE :



RATIO ERROR (%) vs RATED BURDEN @ INPUT CURRENT :



TRAFO WEIGHT:

Approx. Weight = 0.0473 kg / pc

MARKING INFORMATION:

L01-6217
 ● Ac yr / wk code
 ↙
 Dot mark for Start pin identification

-----Initial Issue-----	1	0	Balaji. R	18-Nov'2015
Changes	Issue	Rev	Initial	Date